

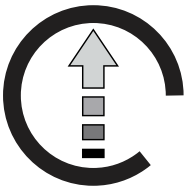
HAFCO

DELUXE SERIES



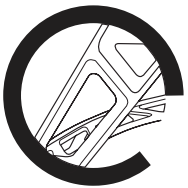
Swivel Castors

5 x 100 wheels (2 with brakes)



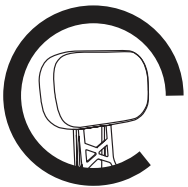
Height Adjustable

Seat Height 660 - 760mm



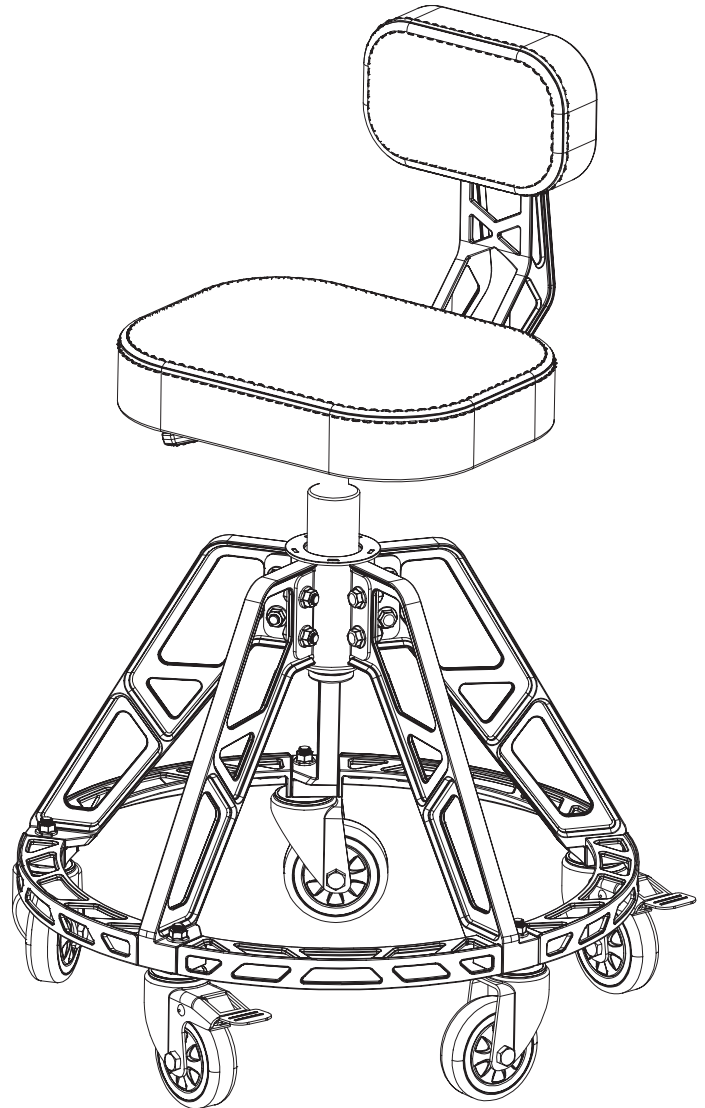
Heavy Duty Frame

Cast Aluminum



Sturdy Backrest

240 x 150mm



Edition : 1.0
Date: (10/25)

Instruction Manual

HIGH ROLLER SEAT DELUXE SERIES

Order Code: (A3616)

BEFORE ASSEMBLING

Please read this instruction manual before assembly.



CAUTION

Before assembly please pay attention to the following points in priority;

Confirmation of components: Before assembling, please confirm all parts arrived and are in good order.

Site for assembly: Please assemble it on the soft floor such as smooth carpet and flannel blanket. When you assemble on wooden floor, please put thin towels on the floor.

Points for attention when assembling: Please wear gloves to ensure that it can be assembled safely, and use two persons to help in the assembly process.

SAFETY INFORMATION

1. Do not ride on this seat or use to swivel out of control. Always use as its intended purpose.
2. Engage both brakes when this seat is not being moved. This prevents it rolling away.
3. Do not tow this seat with power equipment.
4. Always use this seat on a flat, level, hard surface. Do not use on an inclined surface as serious injury can occur.



CAUTION: Do not attach or mount this product to a vehicle. This may cause personal injury or product damage. Mounting this product to any vehicle in any manner will void warranty.



CAUTION: Keep the seat on level surfaces. The product may become unstable and tip if stored or moved on an un-level surface, which may cause personal injury or product damage.



CAUTION: Do not stand on this product. You may fall which may cause personal injury or product damage.



CAUTION: Lock the caster wheel brakes to stop the seat rolling away or serious injury can occur.



CAUTION: Note the weight of the person and never overload its working capacity.



CAUTION: Use safety shoes as all times.

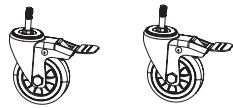


WARNING!

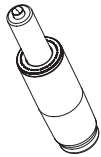
WARNING! READ, UNDERSTAND AND FOLLOW ALL INSTRUCTIONS, AND WARNINGS BEFORE OPERATING THIS TOOL. FAILURE TO DO SO MAY RESULT IN PERSONAL INJURY AND/OR PROPERTY DAMAGE AND WILL VOID WARRANTY.



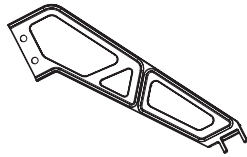
① 4" Caster



② 4" Caster with brake

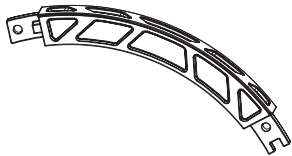


③ Pneumatic cylinder

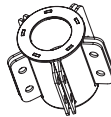


④ Support frame

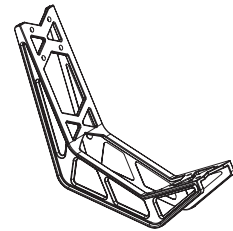
Part No.	Description	QTY
①	4" Caster	3
②	4" Caster with brake	2
③	Pneumatic cylinder	1
④	Support frame	5
⑤	Frame connector	5
⑥	Pneumatic cylinder connector	1
⑦	Backrest connector	1
⑧	Seat pad	1
⑨	Backrest pad	1
⑩	Flange screw	10
⑪	Flange nut	15
⑫	Screw with washer	4
⑬	Open-end wrench	2
⑭	Hex wrench	1



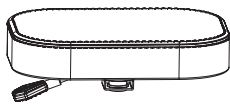
⑤ Frame connector



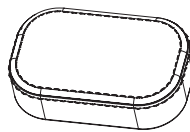
⑥ Pneumatic cylinder connector



⑦ Backrest connector



⑧ Seat pad



⑨ Backrest pad



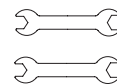
⑩ Flange screw



⑪ Flange nut



⑫ Screw with washer



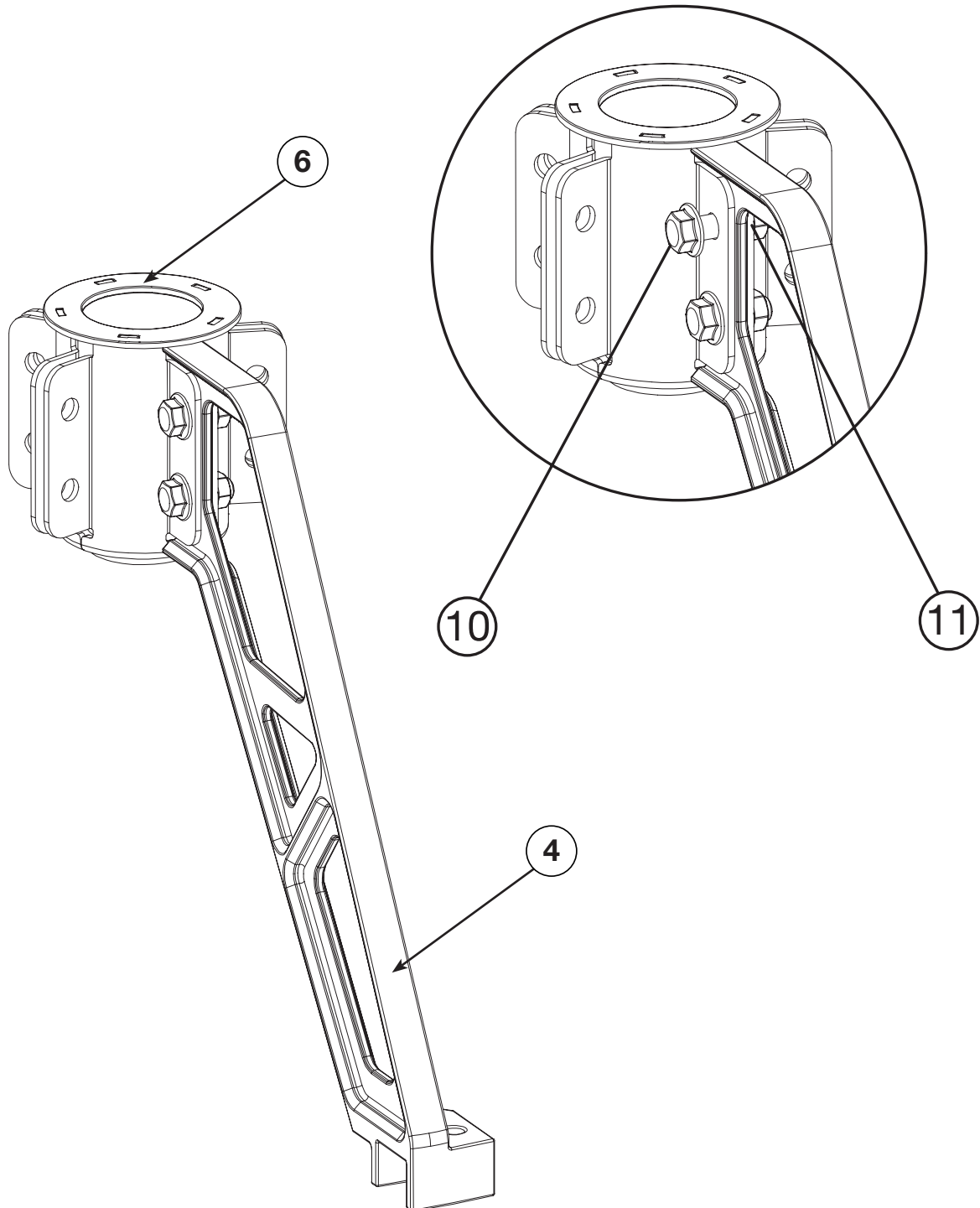
⑬ Open-end wrench



⑭ Hex wrench

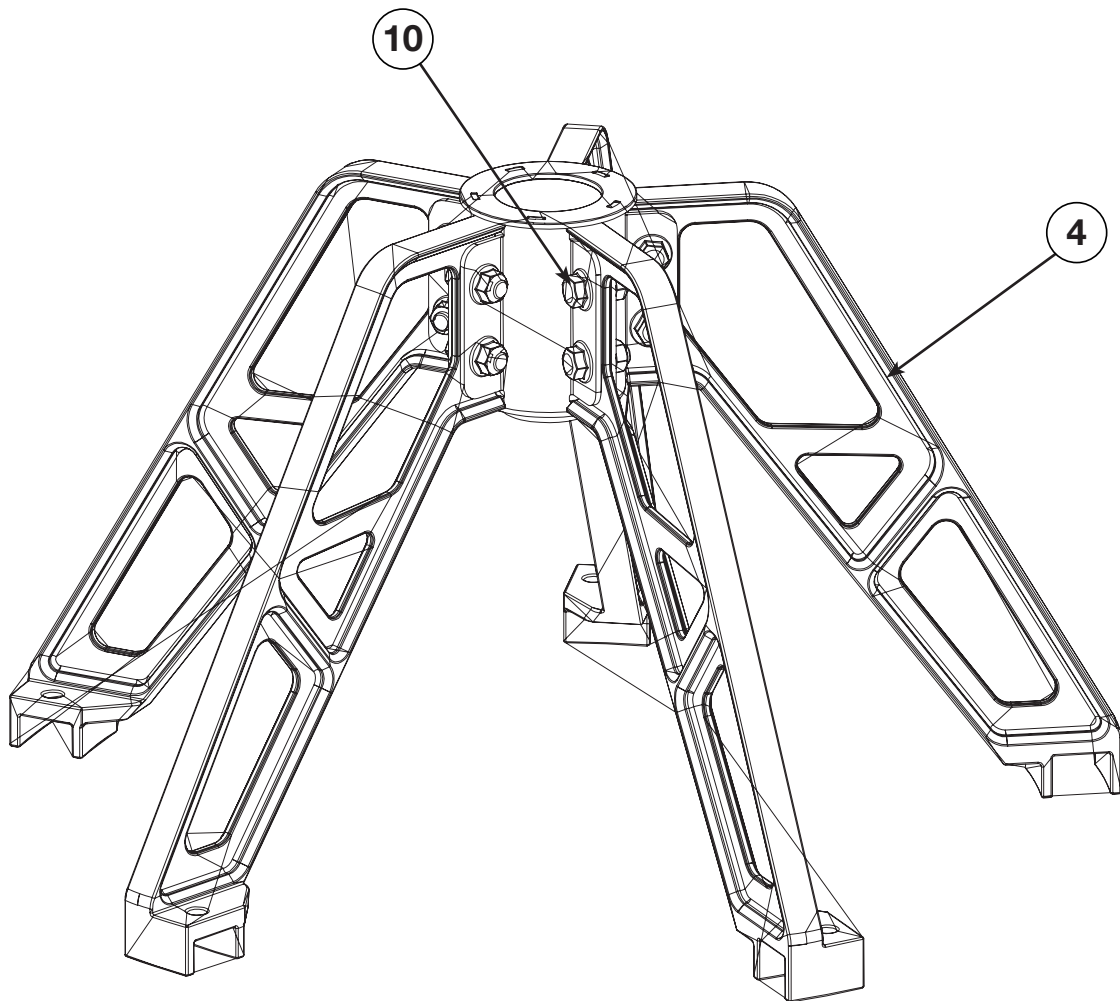
STEP 1.

Fit the upper part of one of the support frame (4) into the jam of the pneumatic cylinder connector (6), and then connect it with the flange screw (10) through the small hole, pre-lock it with a flange nut (11), and lock it with the open-end wrench (13).



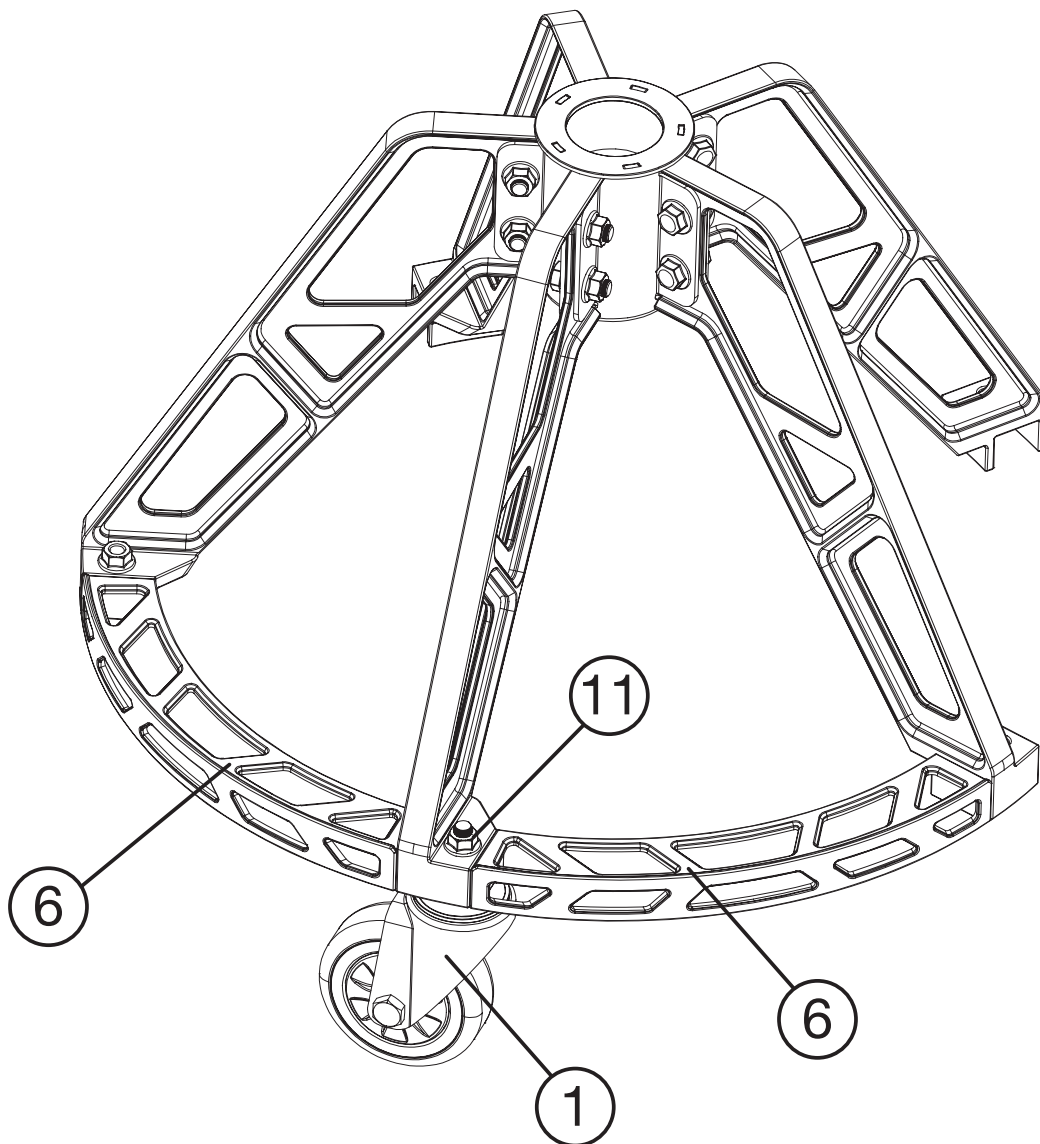
STEP 2.

Assemble and lock the 5 support frames (4) into the same step as above, keeping the screws (10) in the same direction.



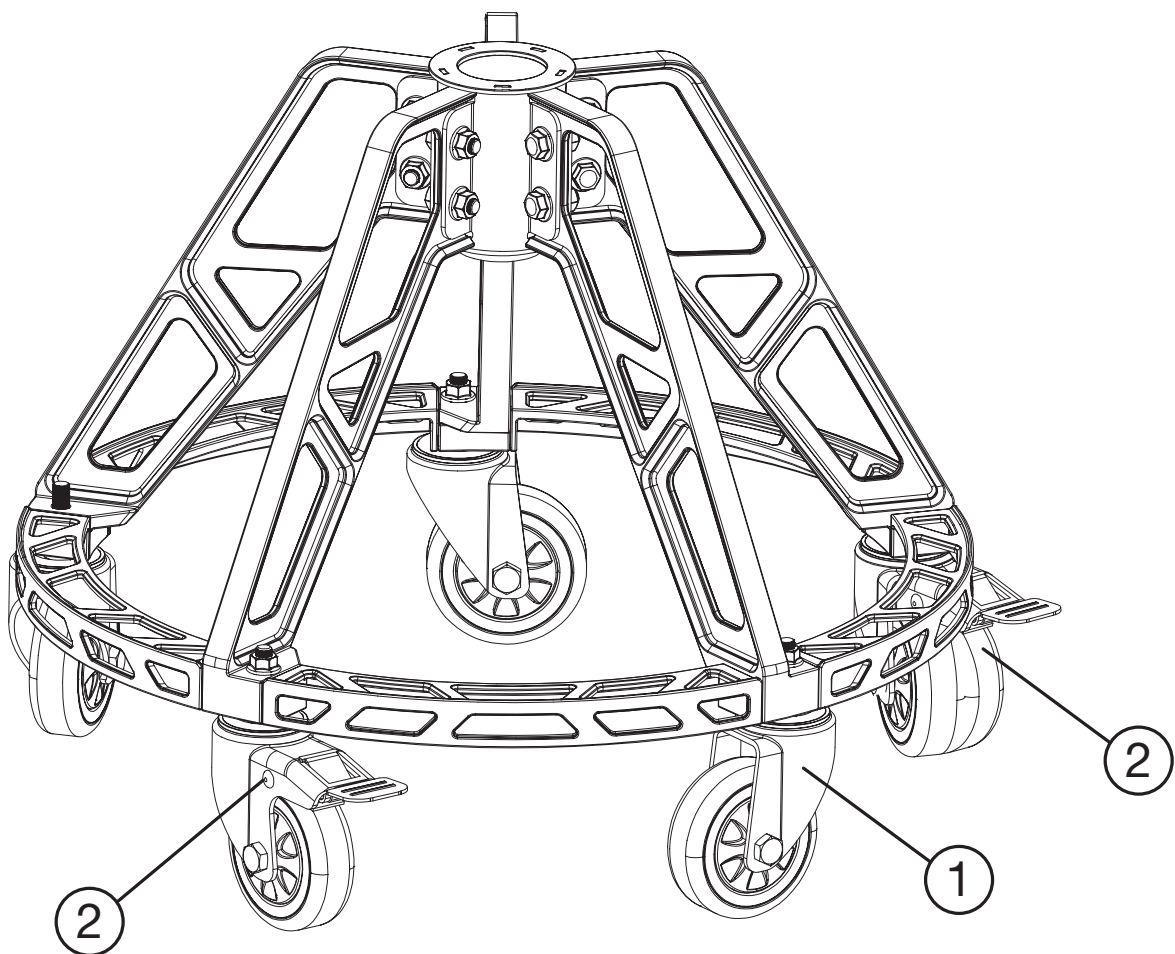
STEP 3.

Assemble the frame connector (6) as shown, with the left side at the bottom and the right side at the top, while inserting the caster (1) through and locking with the nut (11) with an open-end wrench (13).



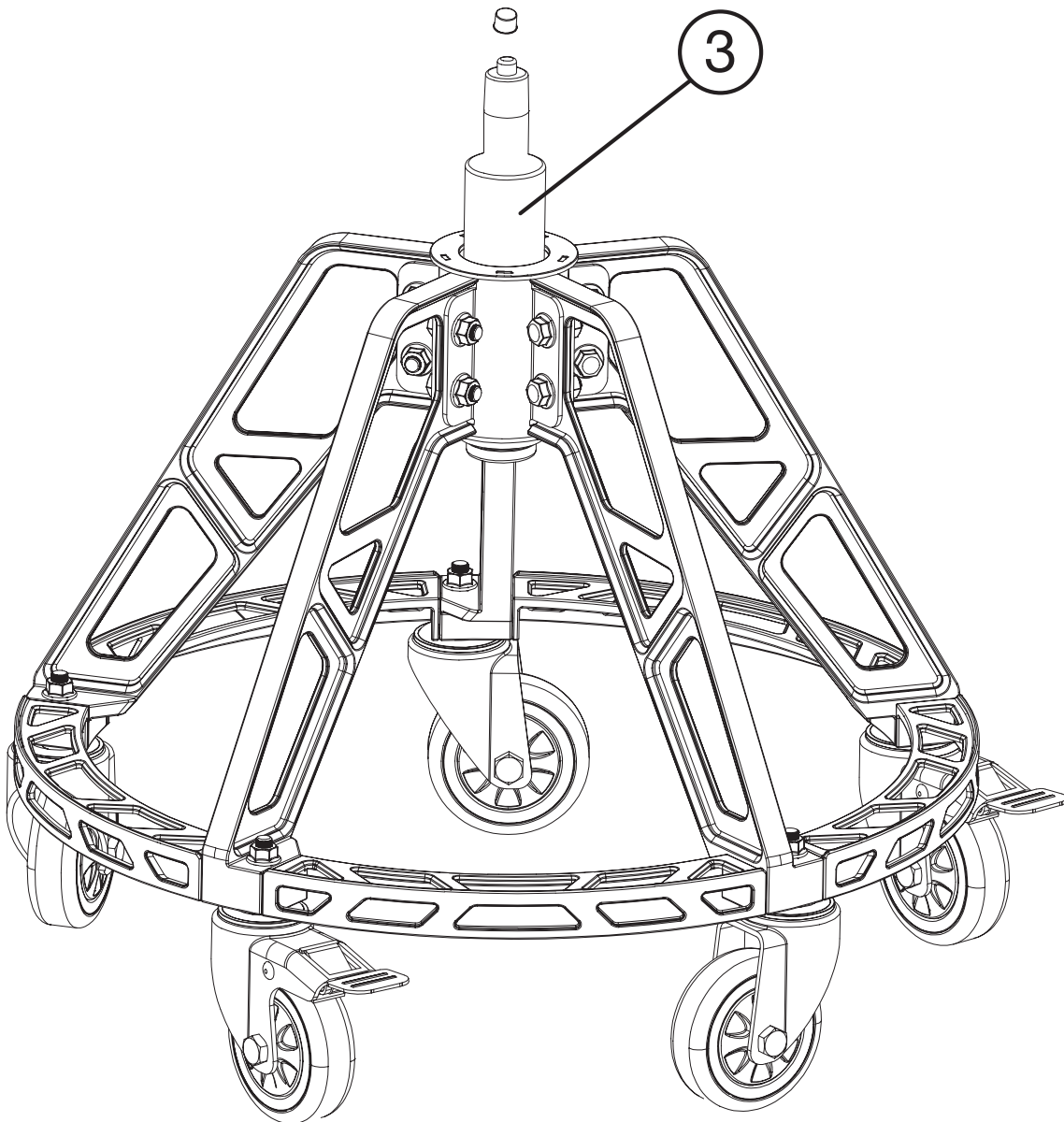
STEP 4.

Assemble the 5 casters in sequence, the casters with brakes should be set apart for maximum braking.



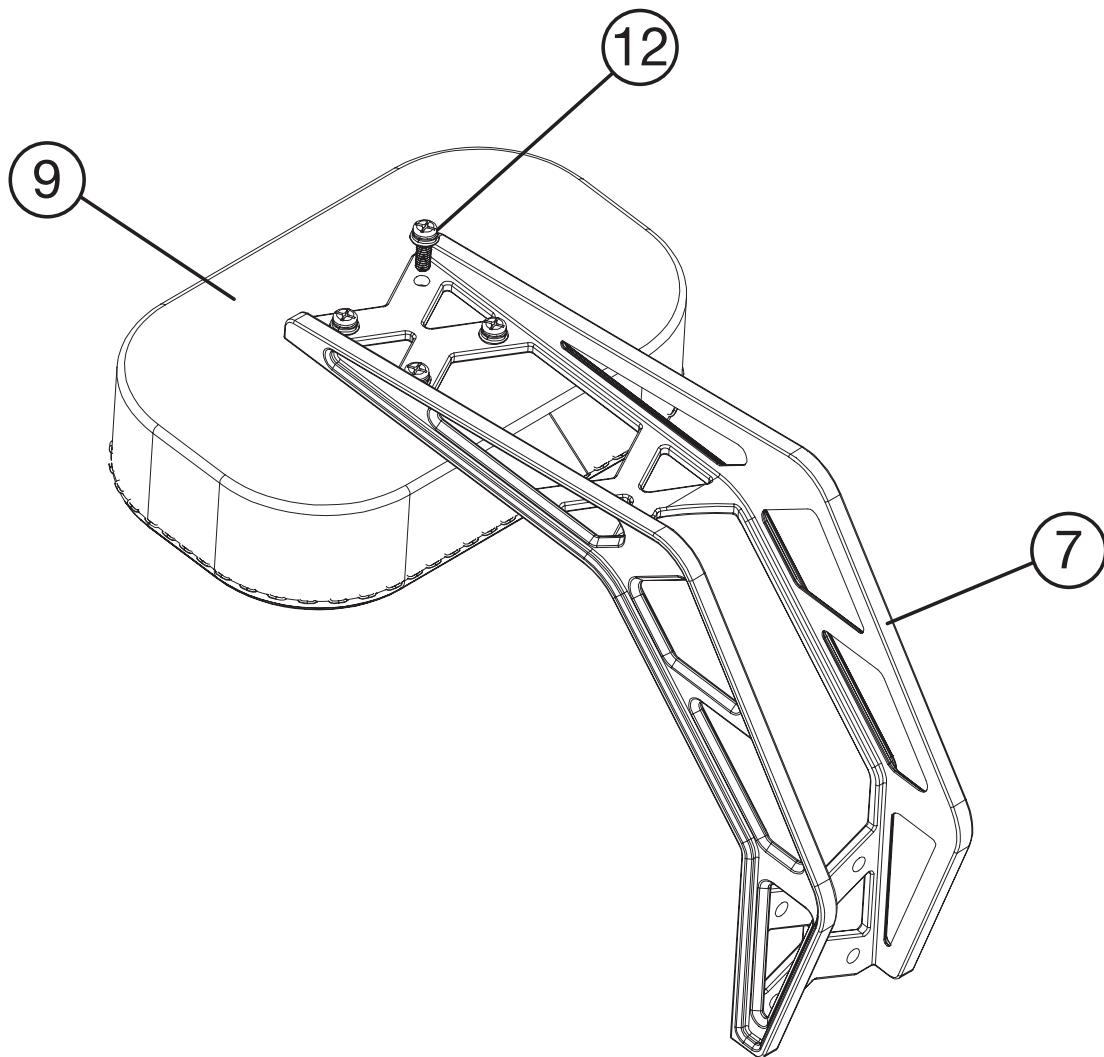
STEP 5.

Remove the protect-cap from the pneumatic cylinder (3), then install the pneumatic cylinder into the bottom frame as shown below.



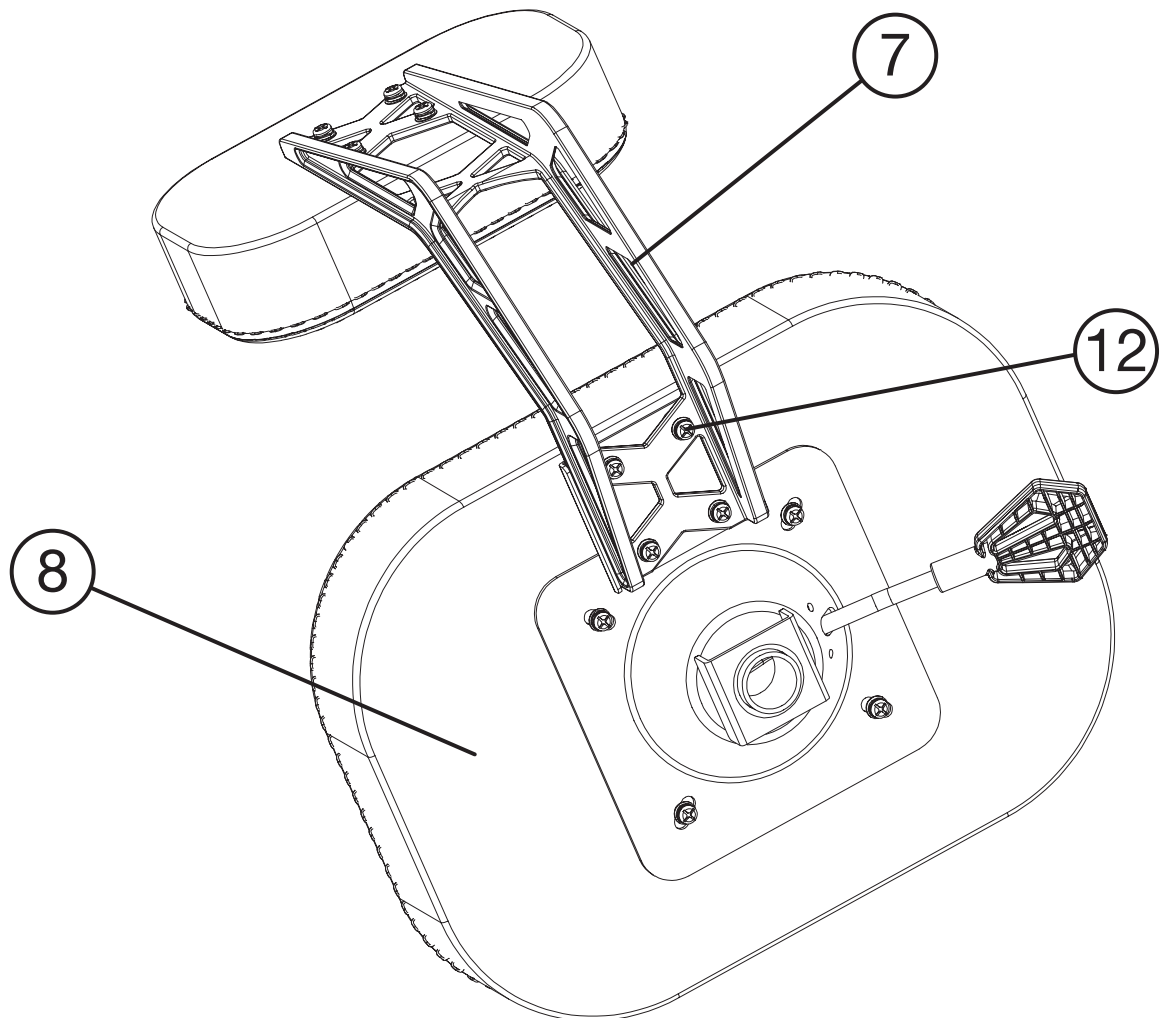
STEP 6.

Attach the backrest pad (9) to the backrest connector (7) as shown and lock it in place with the 4 screws with washers (12). Note that the leather stitching portion of the backrest pad faces down for assembly.



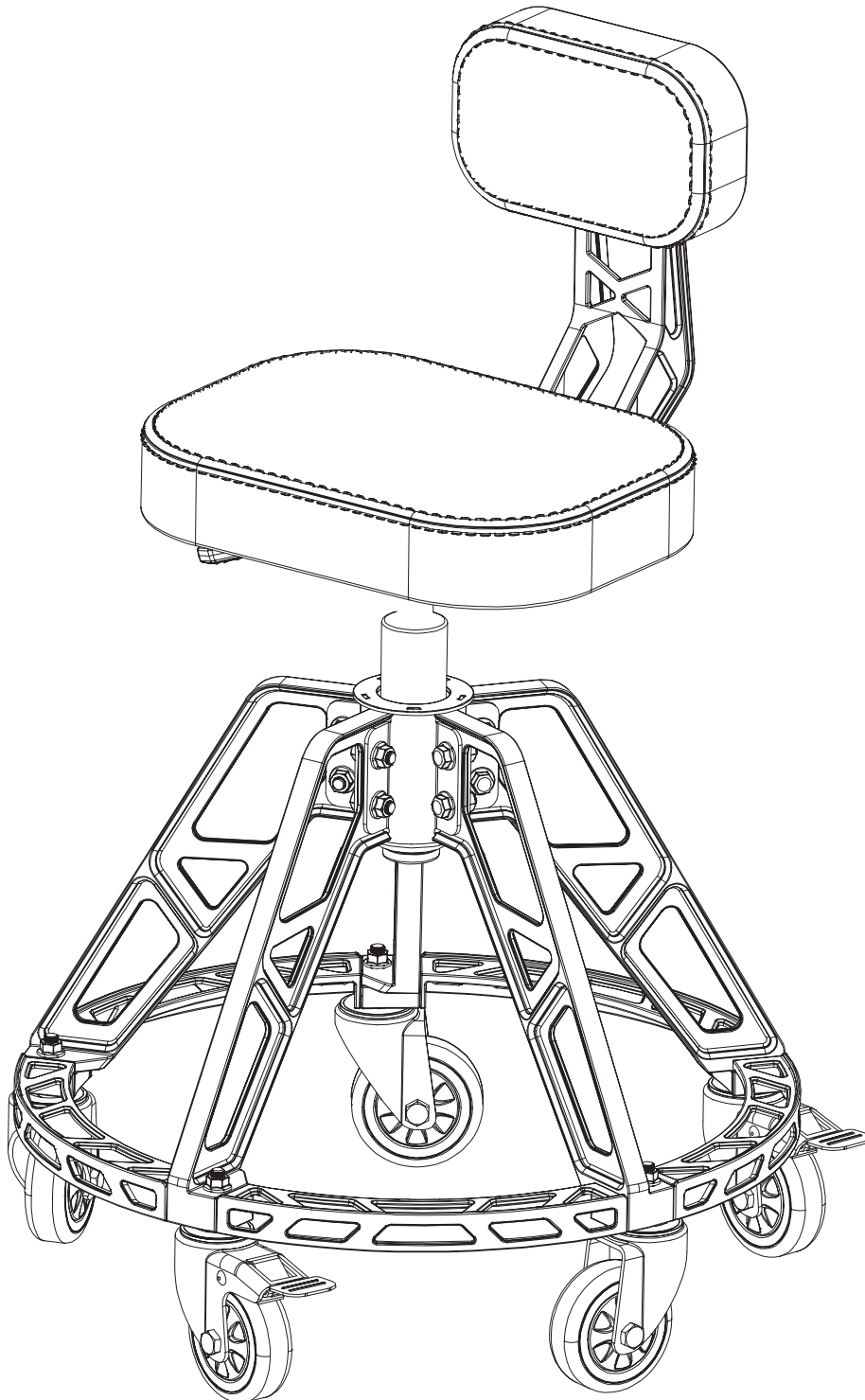
STEP 7.

Lap the bottom of the backrest connector (7) as shown onto the seat pad (8) as shown and lock it in place with the 4 screws with washer (12).



STEP 8.

Insert the chassis of the assembled seat onto the pneumatic cylinder as shown to complete the assembly.





ENVIRONMENT PROTECTION

Recycle unwanted materials instead of disposing of them as waste. All tools, accessories and packaging should be sorted, taken to a recycling centre and disposed of in a manner which is compatible with the environment. When the product becomes completely unserviceable and requires disposal, drain any fluids (if applicable) into approved containers and dispose of the product and fluids according to local regulations.

IMPORTED BY

HARE & FORBES
MACHINERYHOUSE

Australian Distributor

Hare & Forbes
Machineryhouse
Sydney - Melbourne
Adelaide - Brisbane - Perth

Ph: 1300 202 200
www.machineryhouse.com.au

MACHINERYHOUSE

New Zealand Distributor

Machineryhouse
Auckland
Christchurch

Ph: 0800 142 326
www.machineryhouse.co.nz